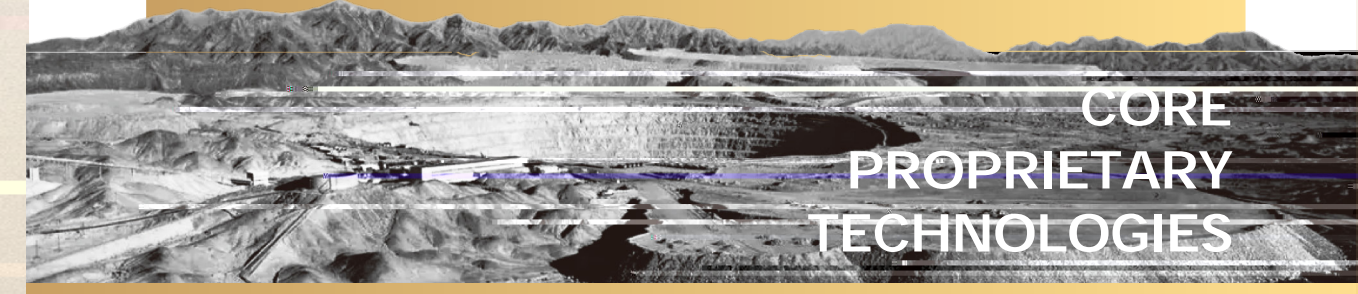


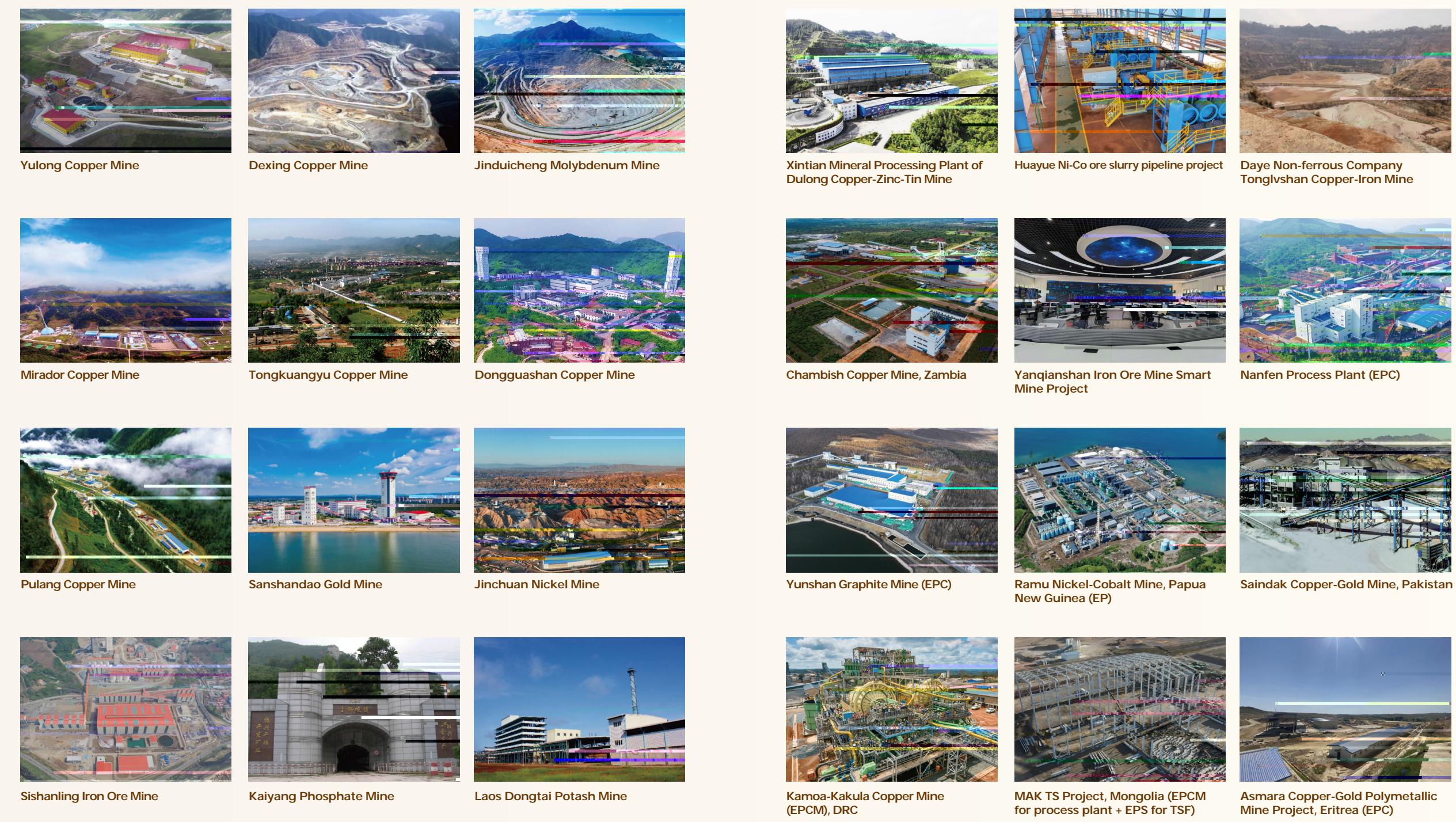
- Comprehensive technology of deep buried resources mining
- Block caving mining
- Ultra-large scale mine development
- Large-scale open-pit comprehensive mining
- Open-pit and underground combined mining
- Low-grade and hard-to-mine deposit mining
- Stability monitoring of open-pit slope and TSF
- Polymetallic ore mineral processing
- Slurry long distance pipeline delivery
- Centerline tailings damming
- Combined waste rock-tailings damming
- Large-scale tailings dry stacking
- Intelligent mine "MIM+" technology
- Unmanned track transportation system



**National standards compiled by China ENFI**

S/N	Standard name	Standard type	Standard Code
1			
2			
3			
4			
5		National standard	
6			
7			
8			
9			
10			
11			
12			
13			
14			

**TYPICAL PROJECTS**



**TYPICAL PROJECTS**